



# RCA Hybrid Model

Operational Plans

# Topics

## Schedule Details

- Live & Asynchronous
- Special Education
- Intervention
- On-site before and after care
- Specials
- Transition times
- Staggered entry

## Safety

## Staffing

## Processes

- Family Sign up process
- Cohort Organization
- Arrival & Dismissal

## Next Steps

## Questions



# Scheduling

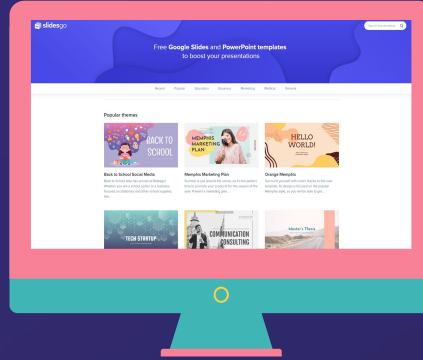
# Schedule Details – Green Week

|                | Monday-Thursday   | Friday  |
|----------------|---|---|
| 7:30am-8:00am  | Carpool   | 8:00-8:50<br>Cohorts A & B Homeroom/Moral Focus |
| 8:00am-11:00am | Cohort A Hybrid In Person<br>Cohort A Virtual Streaming     | Asynchronous Work for all students              |
| 11:00-11:30am  | Carpool   |   |
| 12:10pm-3:00pm | Cohort B Hybrid & Virtual<br>Students Streaming Live Online |   |

# Schedule Details – Blue Week

|                | Monday-Thursday   | Friday  |
|----------------|---|---|
| 7:30am-8:00am  | Carpool   | 8:00-8:50<br>Cohorts A & B Homeroom/Moral Focus |
| 8:00am-11:00am | Cohort B Hybrid In Person<br>Cohort B Virtual Streaming     | Asynchronous Work for all students              |
| 11:00-11:30am  | Carpool   |   |
| 12:10pm-3:00pm | Cohort A Hybrid & Virtual<br>Students Streaming Live Online |   |

# Asynchronous Day (Fridays)



- Students will attend Homeroom & Moral Focus Session in the morning
- Virtual Assemblies held on this day
- Teachers will post asynchronous work for students to complete
- One-on-one, Data and IEP Meetings held on this day

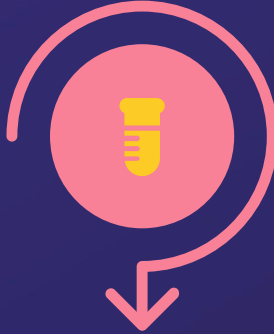
# Additional Hybrid Items to Consider

## Special Education



Intellectually Disabled Special Education Class will attend every week. EC Services will happen both through virtual meets & in person

## Staffing Coverage



Specials & Recess Aides will provide coverage for high risk staff members

## Intervention



Intervention services will continue virtually through live meets

## Next Prep



On-site before and after care provided by Next Prep

# Specials

- Hosting afternoon Live Sessions Drop-in Style
  - The cohort that was in-person that morning participates in the drop in sessions that week (since other cohort will be having their live online time with the classroom teacher during that time)
  - Live online specials every other week
  - Asynchronous assignments every week



# Transition Times



## Grades K-3

- Mindfulness
- Moral Focus
- Brain Breaks
- Purposeful videos
- Bathroom Breaks



## Grades 4-8

- Transition to new classrooms
- Cleaning
  - **No 2 neighboring grade levels will change classrooms at the same time**
  - **Hall monitors to help with transitions**
  - **Students lined up 6 ft apart**
  - **Teacher wipes down Block 1 desk while Block 2 comes in & sits at Block 2 desk**
  - **Block 3 will sit at Block 1 desk**

# Staggered Entry

Not proceeding with this recommendation.

Start on November 9th so that all Hybrid students can have in-person time prior to the Thanksgiving break

Week of November 9th: Green Week

Week of November 16th: Blue Week



**Safety**

# Safety Precautions



## Plexiglass Desk Barriers

- For your consideration
- Would need at least 170 for grades K-3
- Grades 4-8?



## Deep Cleaning

- Whole school spray Wednesdays & Fridays



## Bathroom Breaks

- Whole group to ensure social distancing & proper sanitizing
- Middle sinks are closed
- Only 2 students in bathroom at a time



## Covid Staging Area

- Housed in Parent Room
- Plastic wipeable barrier
- Staffed by administrator



## Individual Student Supplies



## Masks

# Safety Precautions



## Student Supplies

- Student materials are kept separately/no community supplies

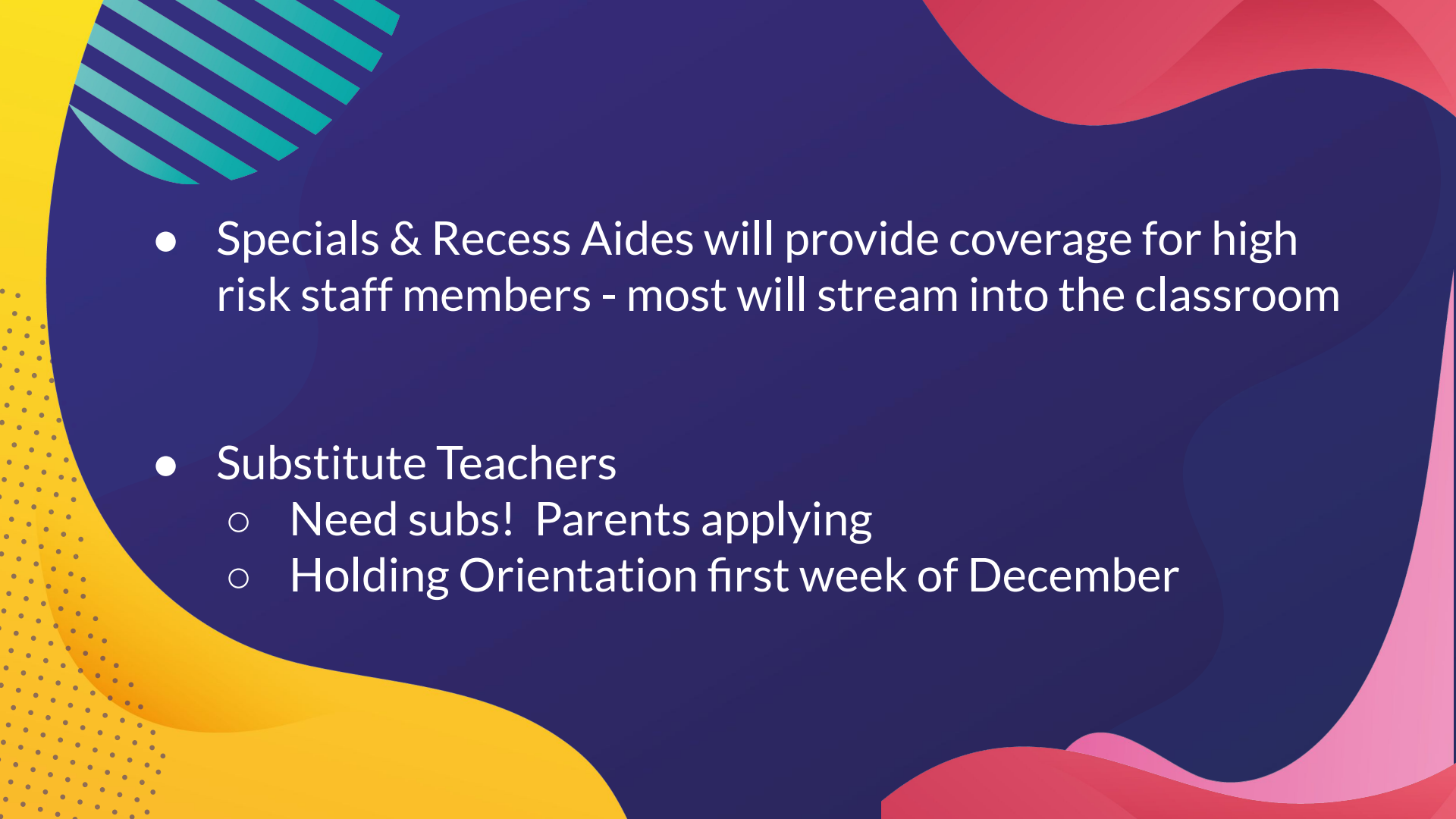


## Masks

- All staff & students wear masks while on campus
- Any parent entering the building must be masked

The background is a dark blue field with large, flowing, organic shapes in shades of blue and purple. Overlaid on these are several geometric and patterned elements: a pink and white diagonal striped shape in the top left, a yellow shape with a white dot pattern in the bottom left, a teal shape with a white dot pattern in the top right, a solid pink shape in the middle right, and a yellow and black diagonal striped shape in the bottom right.

**Staffing**

- 
- Specials & Recess Aides will provide coverage for high risk staff members - most will stream into the classroom
  - Substitute Teachers
    - Need subs! Parents applying
    - Holding Orientation first week of December



# Processes



# Family Sign up Process

- Sign up will be sent out on October 18th along with presentation to develop family understanding of learning model
- Deadline for return will be October 23rd



# Cohort Organization

Contact families with siblings to find out their preference (keep separate or move to same)



Preliminary cohort numbers based on initial survey



Hybrid/Virtual

Can move students from one cohort to the other if need be based on which one has more room



Commitment to Virtual for the trimester





# Carpool: Arrival

- More staffing needed than usual
- Parents will complete pre-screening app prior to entering the carpool line on their own device
- Carpool workers will check each child's temperature prior to them exiting the car
- Grade levels will use different doors to enter the school; at the door they will hand sanitize
- Students will then proceed on blue lines, staying one dot apart, to their homeroom classroom where they will be greeted by the teacher



# Carpool: Dismissal

- Driveline will be utilized - fewer numbers than normal will be entered
- Students will exit the front door when their number comes up
- Teachers will be stationed at their doors to help students remember to social distance in the hallways - stay one dot apart
- Students will stand along the wall on spots that are 6 feet apart until released to their car



# Next Steps

# Next Steps

**Finalize attendance  
process**



**Teacher Training**

**Roll out carpool  
screening application**



**Instructional Considerations**

- Pacing
- Feedback & Grading Expectations

**Parent Communication  
of plan/Ensure  
understanding**





Questions?