



# Johnston Charter Academy

# NHA's Epidemiological Consultant

---

NHA works with an epidemiologist to help create a decision-making process that incorporates epidemiological data about the pandemic and effectively create a means by which NHA can decide how to best open schools safely.

The epidemiologist helps NHA understand and work with tools, information on safety measures, and data analysis to reflect the best understanding of this virus and pandemic; however, does not make or recommend specific decisions about clinical medicine or care of students or staff.

# Key Public Health Considerations

---

## Epidemiological factors:

- **Disease incidence:** The spread of this disease is driven more by its presence in the community than by what happens indoors at schools.
- **Viral transmissibility:** an estimate of the average number of people that one person with COVID-19 is likely to infect in a population without any immunity from previous infection or any interventions. (*Goal: rates below 1 because they show that the rate of disease spread is slowing*)
- **Test positivity fraction:** A significantly higher positivity rate than 5 suggests that too little testing is being done and that the disease is likely spreading or accelerating in the community. (*Goal: rate less than 5*)

# Current Data: North Carolina

## North Carolina

 SHARE

 RECEIVE ALERTS

### COVID RISK LEVEL


#### At risk of outbreak

North Carolina is at risk of an outbreak. COVID cases are either increasing at a rate likely to overwhelm hospitals and/or the state's COVID preparedness is below international standards.

### UPDATE


As of October 14th, we have switched to using data from the U.S. Department of Health & Human Services to calculate Positive Test Rate for most states.

### DAILY NEW CASES

 **19.2** PER 100K


Very large number of new cases

### INFECTION RATE

 **1.05**

COVID is still spreading, but slowly

### POSITIVE TEST RATE

 **6.6%**

Indicates adequate testing


### ICU HEADROOM USED

 **34%**

Can likely handle a new wave of COVID

Beta

### TRACERS HIRED

 **12%**

Insufficient tracers, even if the program is run effectively

Beta

# Current Covid Data: Johnston County

---

The following data was retrieved on:  
October 25, 2020

Weekly Cases per/100k ( $< 100$ )	State Test Positive Ratio ( $< 5\%$ )	State Infection Rate ( $< 1\%$ )
148.4	6.55 %	1.17 %

# Data Analysis

---

- Johnston County is trending higher than the state on # of new weekly cases with 148.4 new weekly cases versus the state with 134.4.

# Current Data: Wake County

---

The following data was retrieved on:  
October 25, 2020

Weekly Cases per/100k ( $< 100$ )	State Test Positive Ratio ( $< 5\%$ )	State Infection Rate ( $< 1\%$ )
60.3	6.55%	0.93%

# Data Analysis

---

- Wake County is trending lower than the state on # of new weekly cases with 60.3 new weekly cases versus the state with 134.4. (Good News!)



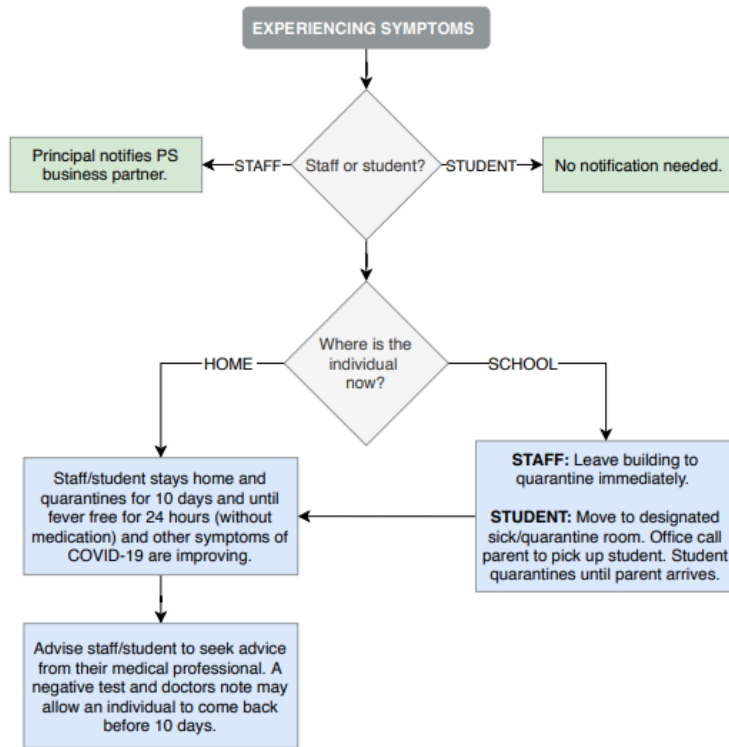
# Parent Survey Data

---

- Currently (66% of families) have requested placement for hybrid at the beginning of the 2nd trimester.
- Currently (34% of families) have requested placement for virtual at the beginning of the 2nd trimester.

# NHA COVID-19 STAFF/STUDENT RESPONSE PLAN

## EXPERIENCING SYMPTOMS NEXT STEPS



**Symptoms** - Any one of the following not explained by a known medical or physical condition:

- fever
- uncontrolled cough
- shortness of breath

OR at least two of the following not explained by a known medical or physical condition:

- loss of taste or smell
- muscle aches
- sore throat
- severe headache
- diarrhea
- vomiting
- abdominal pain

**Communications:** No communications required.

**Compensation/benefits:** Principal should reference the Absence Matrix found in the Principal Live Binder (Back to School Playbook > People Services > Absence/Leaves Matrix) to direct their employee about their compensation and benefits.

**Facilities:** Enhanced cleaning already in place. No additional cleaning protocols.

**Quarantine requirements:** Staff/student is not required to quarantine if family member/roommate is sick and has not tested positive for COVID-19 or if the family member/roommate are quarantining due to exposure.

**School or classroom closure:** No closures required unless advised by health department.

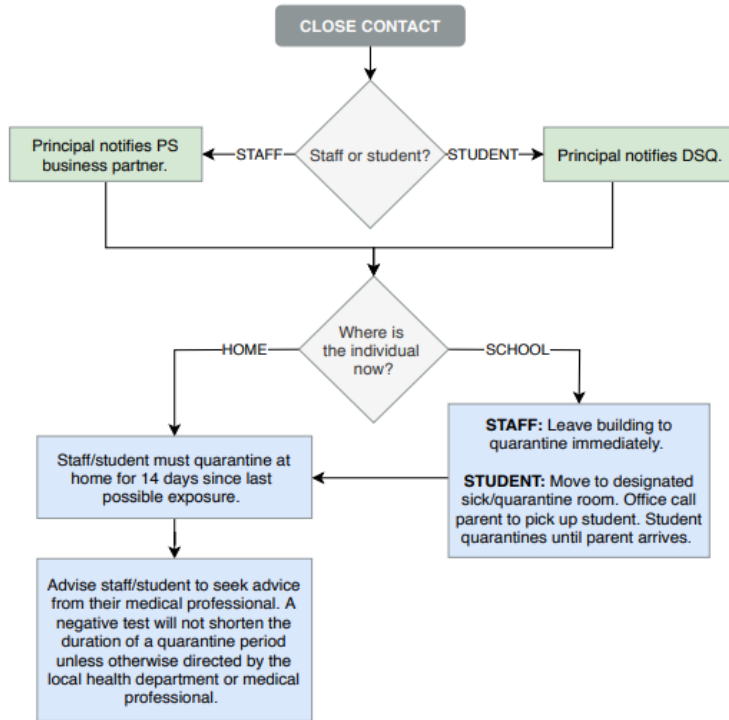
RESPONSE ACTION STEP

PRINCIPAL ACTION STEP

DSQ ACTION STEP

# NHA COVID-19 STAFF/STUDENT RESPONSE PLAN

## CLOSE CONTACT NEXT STEPS



**Close contact** is defined as being within six feet of someone for 15 minutes or longer who tested positive for COVID-19, regardless of mask use.

**Communications:** Communication is sent to the exposed party if the exposure was caused by a staff or student.

**Compensation/benefits:** Principal should reference the Absence Matrix found in the Principal Live Binder (Back to School Playbook > People Services > Absence/Leaves Matrix) to direct their employee about their compensation and benefits.

**Facilities:** Enhanced cleaning already in place. No additional cleaning protocols.

**Quarantine requirements:** Staff/student is not required to quarantine if family member/roommate is sick and has not tested positive for COVID-19 or if the family member/roommate are quarantining due to exposure.

**School or classroom closure:** No closures required unless advised by health department.

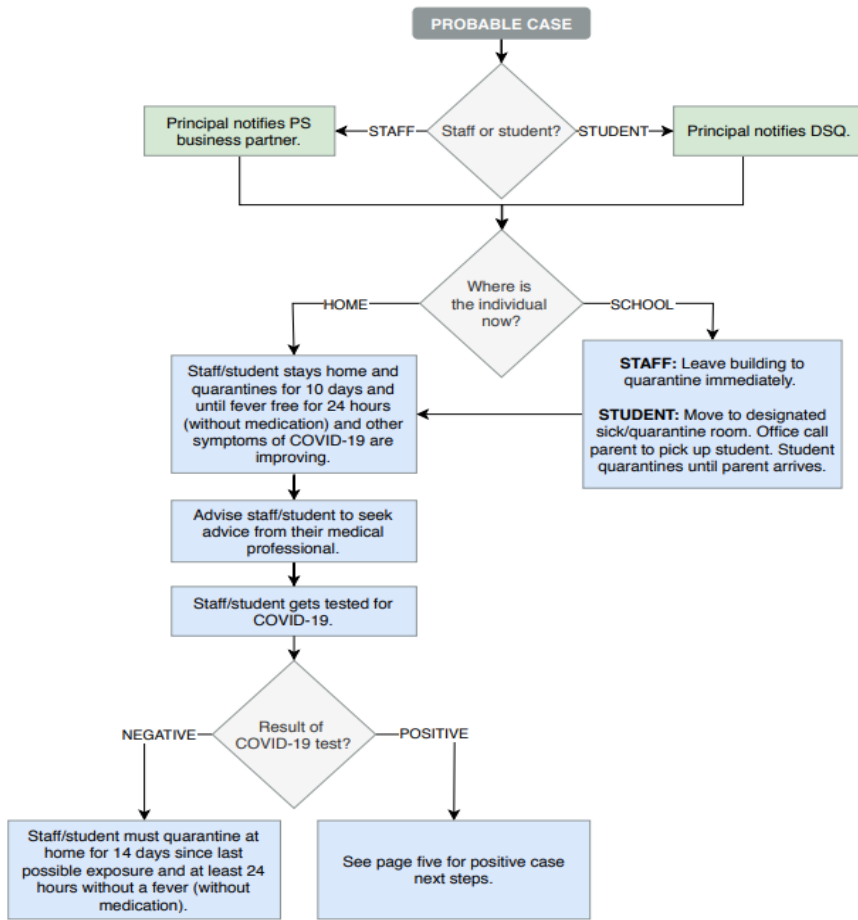
RESPONSE  
ACTION STEP

PRINCIPAL  
ACTION STEP

DSQ  
ACTION STEP

# NHA COVID-19 STAFF/STUDENT RESPONSE PLAN

## PROBABLE CASE NEXT STEPS



**Probable cases** are defined as having both clinical and epidemiological evidence of COVID-19 with no confirmatory laboratory testing performed. Clinical evidence is having COVID-19 specific signs and symptoms. Epidemiological evidence is confirmed close contact with someone who has tested positive for COVID-19 in the 14 days prior to symptom onset.

**Communications:** Communication is sent to the exposed party if the exposure was caused by a staff or student.

**Compensation/Benefits:** Principal should reference the Absence Matrix found in the Principal Live Binder (Back to School Playbook > People Services > Absence/Leaves Matrix) to direct their employee about their compensation and benefits.

**Facilities:** Level 3 cleaning procedures - Aramark disinfects affected areas same day using standard PPE. Temporary closure of affected areas at the discretion of Principal/DSQ.

**Quarantine requirements:** Staff/student is not required to quarantine if family member/roommate is sick and has not tested positive for COVID-19 or if the family member/roommate are quarantining due to exposure.

**School or classroom closure:** No closures unless directed by health department. E-team approval needed.

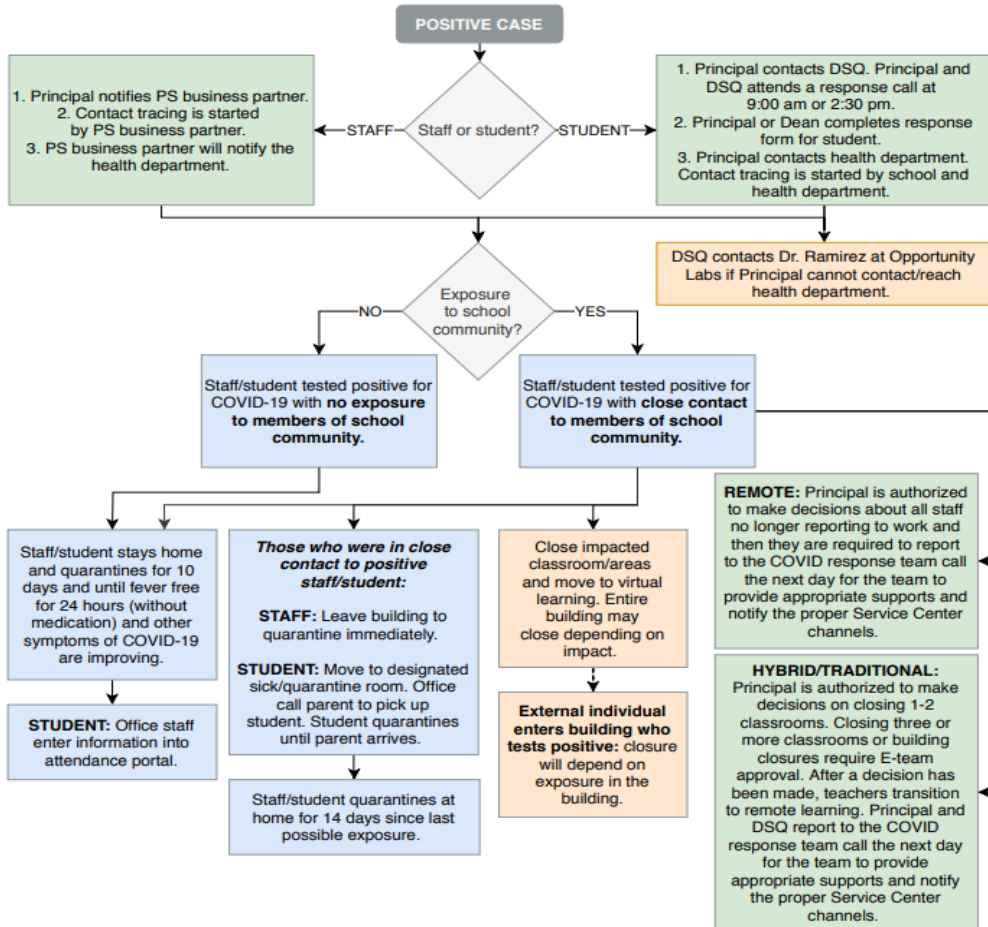
RESPONSE  
ACTION STEP

PRINCIPAL  
ACTION STEP

DSQ  
ACTION STEP

# NHA COVID-19 STAFF/STUDENT RESPONSE PLAN

## POSITIVE CASE NEXT STEPS



**Positive cases** are defined as when someone tests positive for COVID-19. School is notified by staff/family/health department of positive case.

**Communications:** Communications team will create drafts of student/parent and staff letters. Notifies board relations and parent relations.

**Compensation/benefits:** Principal should reference the Absence Matrix found in the Principal Live Binder (Back to School Playbook > People Services > Absence/Leaves Matrix) to direct their employee about their compensation and benefits.

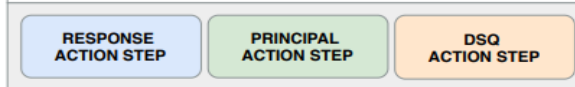
**Facilities:** Level 4 cleaning procedures - Known areas visited in the building must be temporarily closed and vacated to allow for disinfection cleaning. Reference Level 4 Response Procedure.

**School or classroom closure:**

- **REMOTE** - Principal is authorized to make decisions about all staff no longer reporting to work and then they are required to report to the COVID response team call the next day for the team to provide appropriate supports and notify the proper Service Center channels.
- **HYBRID/TRADITIONAL:** Principal is authorized to make decisions on closing 1-2 classrooms. Closing three or more classrooms or building closures require E-team approval. After a decision has been made, report to the COVID response team call the next day for the team to provide appropriate supports and notify the proper Service Center channels.

**Other school closure scenarios:**

1. District closes: bring to the E-team for a case-by-case decision.
2. Neighboring school building closes due to community spread: school will remain open.
3. State/county/health department order virtual learning: follow the guidance.
4. Percentage of staff not available to operate: switch to remote and will be revisited on a daily basis. This decision requires the E-team's approval.



# School Academic Data:

## Johnston (NC:18)

### NWEA Status Measures

Season: Fall 2020-2021

% In Bottom Quartile				% At or Above Grade Level			
Wing	Grade	Math	Reading	Wing	Grade	Math	Reading
K-2	K	5%	4%	K-2	K	90%	90%
	1	5%	1%		1	89%	86%
	2	13%	6%		2	81%	81%
	<b>Wing</b>	<b>7%</b>	<b>4%</b>		<b>Wing</b>	<b>87%</b>	<b>86%</b>
3-5	3	4%	9%	3-5	3	76%	70%
	4	5%	6%		4	70%	83%
	5	5%	9%		5	82%	81%
	<b>Wing</b>	<b>5%</b>	<b>8%</b>		<b>Wing</b>	<b>76%</b>	<b>78%</b>
6-8	6	13%	8%	6-8	6	57%	76%
	7	19%	10%		7	58%	61%
	8	13%	11%		8	54%	76%
	<b>Wing</b>	<b>15%</b>	<b>10%</b>		<b>Wing</b>	<b>56%</b>	<b>71%</b>
<b>School</b>		<b>8%</b>	<b>7%</b>	<b>School</b>		<b>76%</b>	<b>79%</b>

# School Academic Data:

**NWEA Growth Measures**  
Growth Window: Fall - Fall 2020-2021

## All Students

% Met Typical Growth				Growth Index			
Wing	Grade	Math	Reading	Wing	Grade	Math	Reading
K-2	1	90%	73%	K-2	1	11.6	7.9
	3	51%	44%		3	-0.4	-0.8
	Wing	72%	59%		Wing	6.1	3.9
3-5	4	39%	60%	3-5	4	-0.5	4.8
	5	71%	54%		5	5.3	-0.5
	6	18%	49%		6	-7.4	-2.2
	Wing	46%	55%		Wing	-0.1	0.8
6-8	7	37%	49%	6-8	7	-4.6	-1.1
	8	55%	41%		8	-1.6	-1.6
	Wing	45%	45%		Wing	-3.2	-1.3
2-8 Total		47%	50%	2-8 Total		-0.9	-0.1

# Plan A Details and Requirements

---

## **NCDHHS Requirements for Social Distancing under Plan A:**

- Provide social distancing floor/seating markings in waiting and reception areas.
- Mark 6 feet of spacing to remind students and staff to always stay 6 feet apart in lines and at other times when they may congregate.
- Mark 6 feet of spacing to remind teachers and staff to stay apart at times when they may congregate, such as during staff meetings, planning periods, lunch, recess, in teacher lounges and break rooms. (updated 7.15.20)
- Provide marks on the floors of restrooms and locker rooms to indicate proper social distancing.
- Limit nonessential visitors and activities involving external groups or organizations.
- Have teachers and staff monitor arrival and dismissal to discourage congregating and ensure students go straight from the vehicle to their classrooms and vice-versa. (updated 7.15.20)



# Plan A Details and Requirements Con't.

---

## **NCDHHS Requirements for Cloth Face Coverings under Plan A:**

- Ensure that all students from Kindergarten through 12th grade and all teachers, staff, and adult visitors wear face coverings unless the person (or family member, for a student) states that an exception applies, is eating, or is engaged in strenuous physical activity. Cloth face coverings must be worn by all students from Kindergarten through 12th grade and all teachers, staff and adult visitors on buses or other school transportation vehicles, inside school buildings, and anywhere on school grounds, including outside. (updated 7.14.20 and 7.24.20)

# Plan A Details and Requirements Con't.

---

- Continue current hybrid model pending stabilization of metrics. (*Goal by December 4*)
- Then K-5th grade students (A and B) transition to full in-person learning 4 days per week (Wednesday virtual)
- Starting the week of January 4 we move to 5 days per week of in-person instruction with all students.
- 6-8 grade students remain on the Hybrid AA/BB schedule until Governor allows for a Plan A return for middle school students.