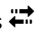



# Peak Charter Academy

School Website: [↑](https://www.nhaschools.com/schools/peak/)  
(https://www.nhaschools.com/schools/peak/)

**Grade Level: K-8 Charter: Yes**  
1601 Orchard Villas Ave, Apex, NC 27502  
919-377-1552

Go to the Analytics Site to   
(https://ncreportcards.ondemand.sas.com/landing.html)

Compare to Other Schools 

 The data for **Wake County Schools** has been added to the comparison charts below because **Peak Charter Academy** is located in that county.

## 2017-18 Overall Performance

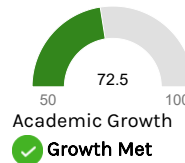
View Performance by School or District

View Performance by Subgroup

**B** 2017-18  
GRADE

**77**

PERFORMANCE GRADE SCORE



Growth Range	Growth Status
85.0-100.0	Exceeded
70.0-84.9	Met
50.0-69.9	Not Met

### Performance Grade Score History



### Academic Growth History



**B** 2017-18  
EOG MATH GRADE

**79**

EOG MATH GRADE SCORE

 **Growth Met**

**B** 2017-18  
EOG READING GRADE

**77**

EOG READING GRADE SCORE

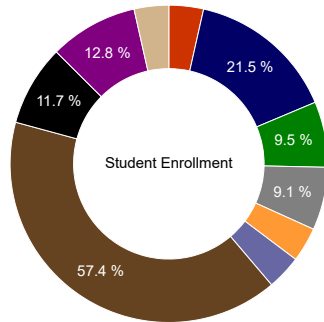
 **Growth Met**

Note - To protect student privacy, some data values for small groups will be suppressed as "> 95%" or "< 5%" in the charts or tables below. For counts less than 10, no data will be displayed.

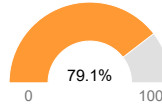
## 2017-18 Student Characteristics & Participation

### Peak Charter Academy

This section describes some key measures about the students at this school.

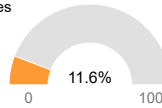


### Incoming Student Readiness



79.1% of the students entering 6th Grade across the school are proficient. 48% of the students entering 6th Grade across the state are proficient.

### Percentage Economically Disadvantaged



11.6% of Students across the school are economically disadvantaged. 44.3% of Students across the state are economically disadvantaged.

- American Indian
- Asian
- Black
- Hispanic
- Pacific Islander
- Two or More Races
- White
- Economically Disadvantaged
- English Learners
- Students w/ Disabilities

Chart Table

## 2017-18 Student Performance

Student Performance by School/District | Student Performance by Subgroup

This section describes student performance in various test subject areas. Student test performance is reported as one of five achievement levels. Levels 1 and 2 are below grade level. Level 3 is grade level proficient. Levels 4 and 5 indicate students are on track for career and college readiness.

### Proficiency in Subject Areas

#### Math Performance

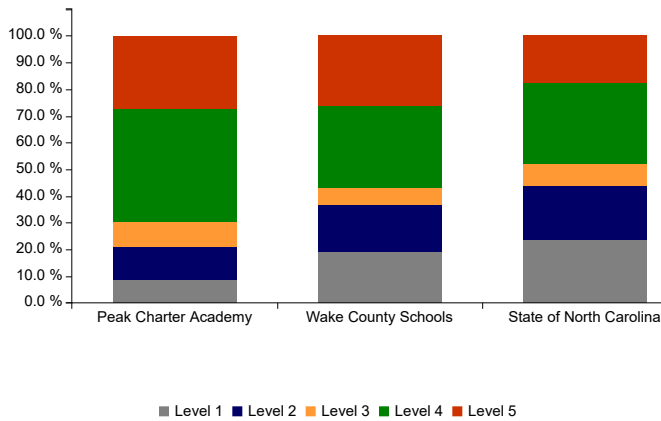


Chart Table

#### English Language Arts/ Reading Performance

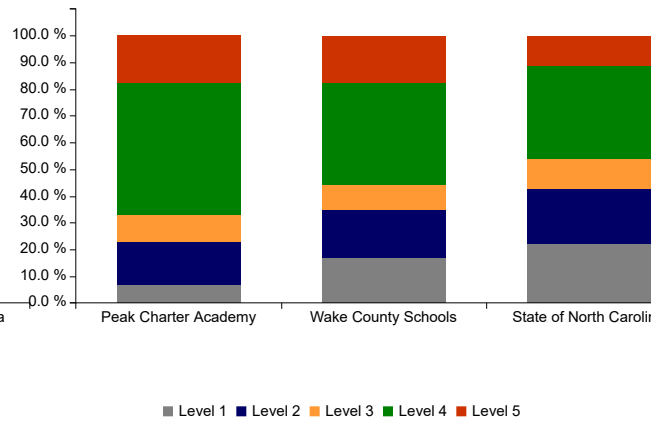


Chart Table

#### Science Performance

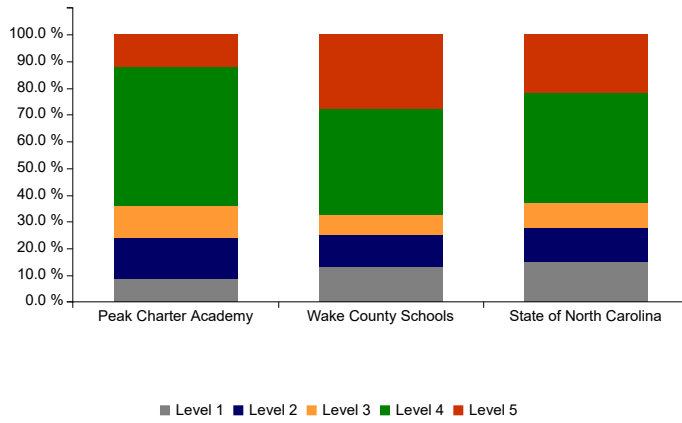
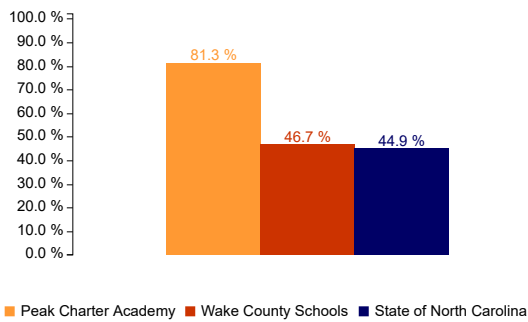


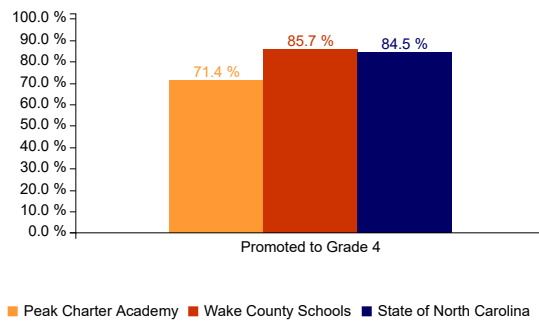
Chart Table

Other Measures

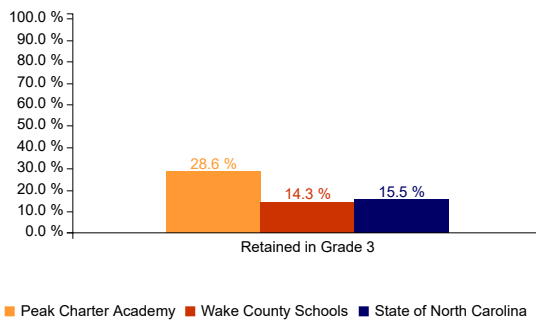
English Learner Progress <sup>i</sup>



Read to Achieve - Promoted to Grade 4 <sup>i</sup>



Read to Achieve - Retained in Grade 3 <sup>i</sup>



Test Participation <sup>i</sup>

Percentage of students participating in state mandated standardized testing.

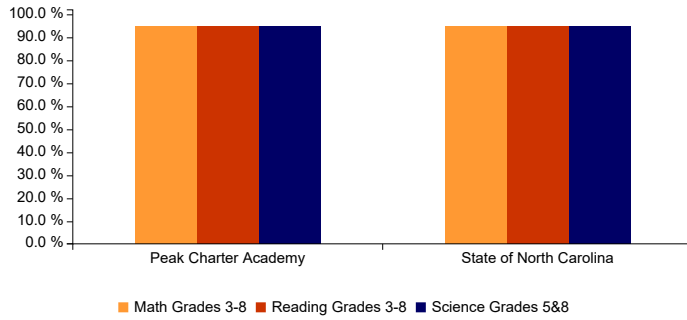


Chart Table

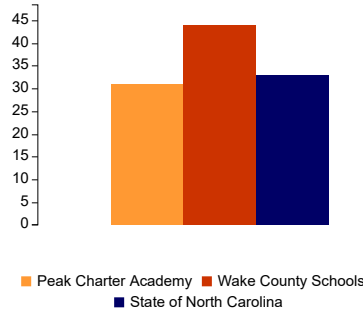
Students with Disabilities Alternate Test Participation

The percent of tested students is expected to be below 1% at the state level. Most schools have so few students that this information may be masked to protect student privacy. <sup>i</sup>

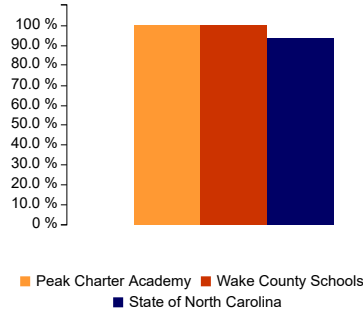
2017-18 Teachers and Qualifications

This section provides information on teachers and their qualifications.

Total Classroom Teachers <sup>i</sup>



Fully Licensed Teachers <sup>i</sup>

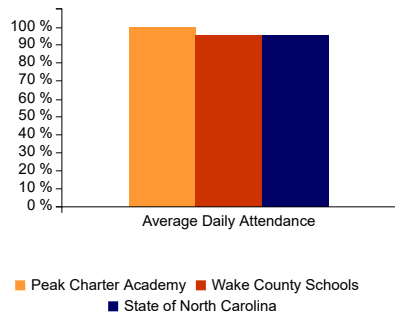


2017-18 School Environment

[View Environment by School/District](#) [View Environment by Subgroup](#)

This section provides information on the school environment and facilities

Student Attendance <sup>i</sup>



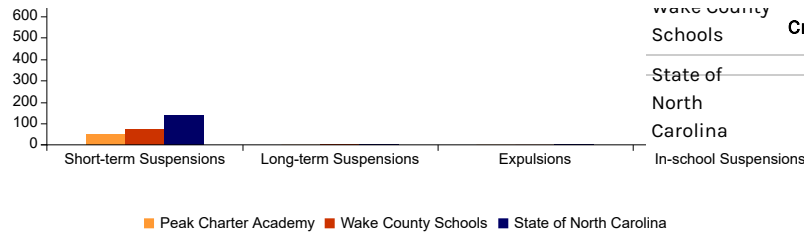
Suspension and Expulsion Rates (per 1000 students) <sup>i</sup>

Acts of Crime, Bullying, Law Enforcement Referrals, and Arrests (per 1000 Students) <sup>i</sup>

	Criminal Acts	Bullying and Harrassment	Referral to Law Enforcement	Arrests
Peak Charter Academy	0.00	13.47	0.00	0.00
Wake County	5.44	7.27	0.28	0.00



School Report Card for Peak Charter Academy



Wake County Schools	Criminal Acts	Bullying and Harrassment	Referral to Law Enforcement	Arrests
State of North Carolina	6.41	11.82	2.53	0.07

Chart Table

Chronic Absenteeism

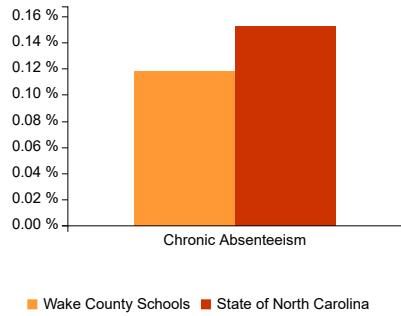


Chart Table

Students Per Device

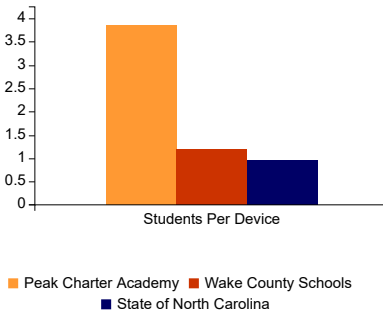


Chart Table

Book Titles Per Student

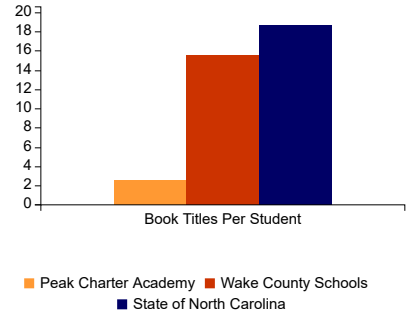


Chart Table

Wireless Access Points per Classroom

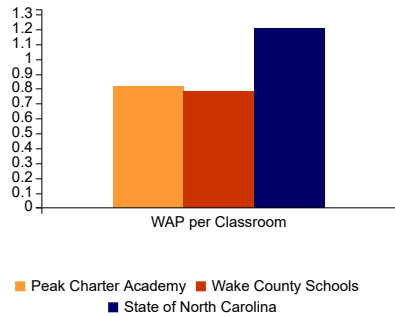


Chart Table

Arts Education

The following arts education programs are offered at Peak Charter Academy.

Dance	Music	Theatre Arts	Visual Arts

Strategic Planning 2017-18

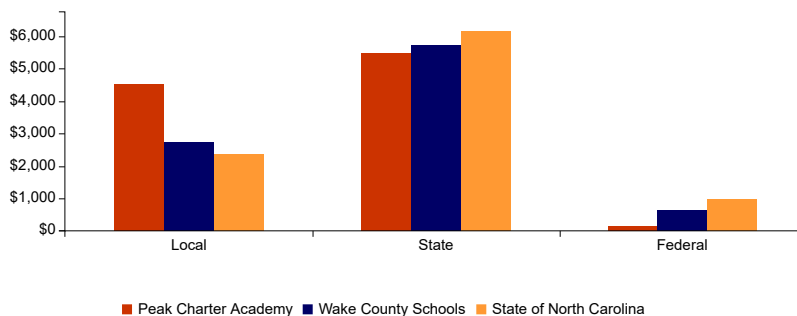
This section provides information on Peak Charter Academy's strategic planning, goals and progress.

- Title 1 Status
- Comprehensive or Targeted Support:
  - Targeted Support and Improvement (TSI) Additional Targeted Support
  - Targeted Support and Improvement (TSI) Consistently Underperforming Subgroups (CU)

Financial Data 2017-18

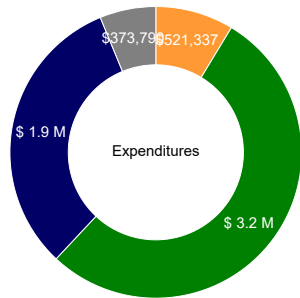
This section provides information on the school funding and expenditures. For more details see the NC Financial Transparency site here (<https://gdacreporting.ondemand.sas.com/srcfinance/school?school=93M000&year=2018>)

Per Pupil Source of Funding

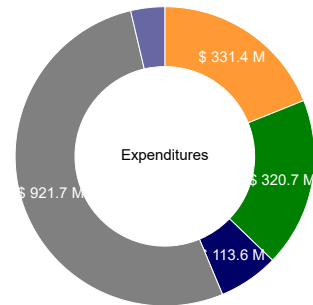


Use of Funds

Peak Charter Academy ⓘ



Wake County Schools ⓘ

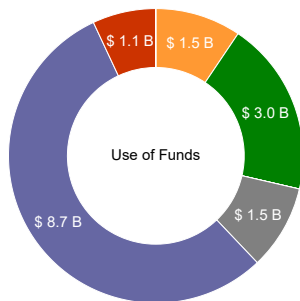


■ Employer Provided Benefits 
 ■ Purchased Services 
 ■ Salaries 
 ■ Supplies and Materials 
 ■ Capital Outlay 
 ■ Employer Provided Benefits 
 ■ Purchased Services 
 ■ Salaries 
 ■ Su

[Chart](#) [Table](#)

[Chart](#) [Table](#)

North Carolina ⓘ



■ Capital Outlay 
 ■ Employer Provided Benefits 
 ■ Other 
 ■ Purchased Services 
 ■ Salaries 
 ■ Supplies and Materials 
 ■ Transfers

[Chart](#) [Table](#)